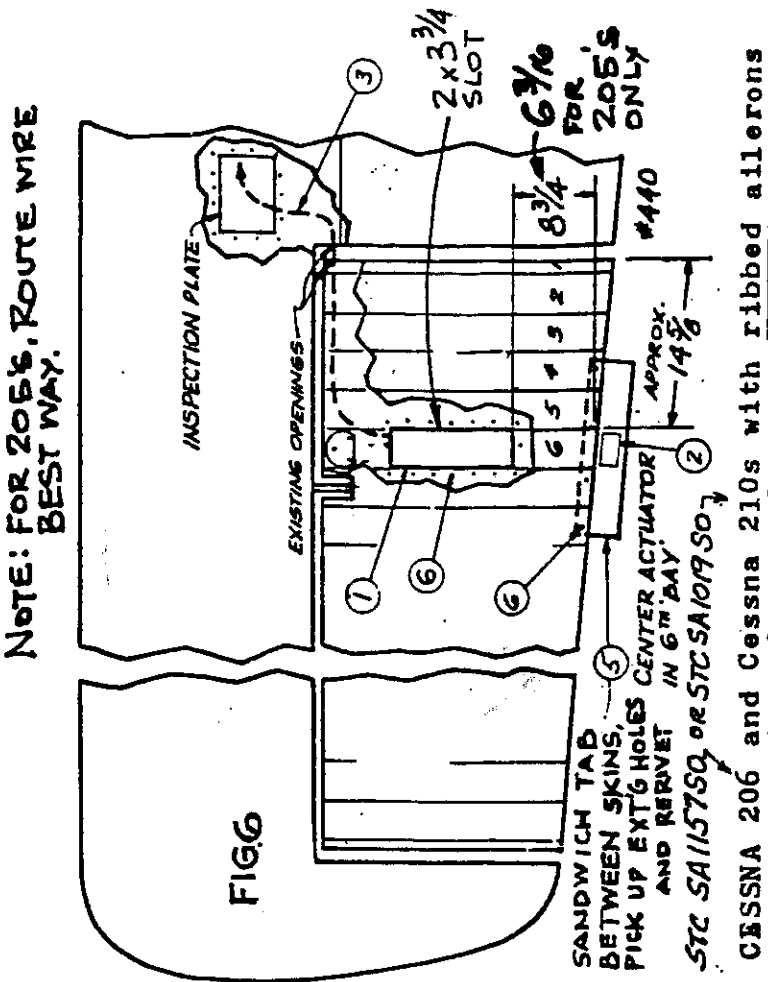
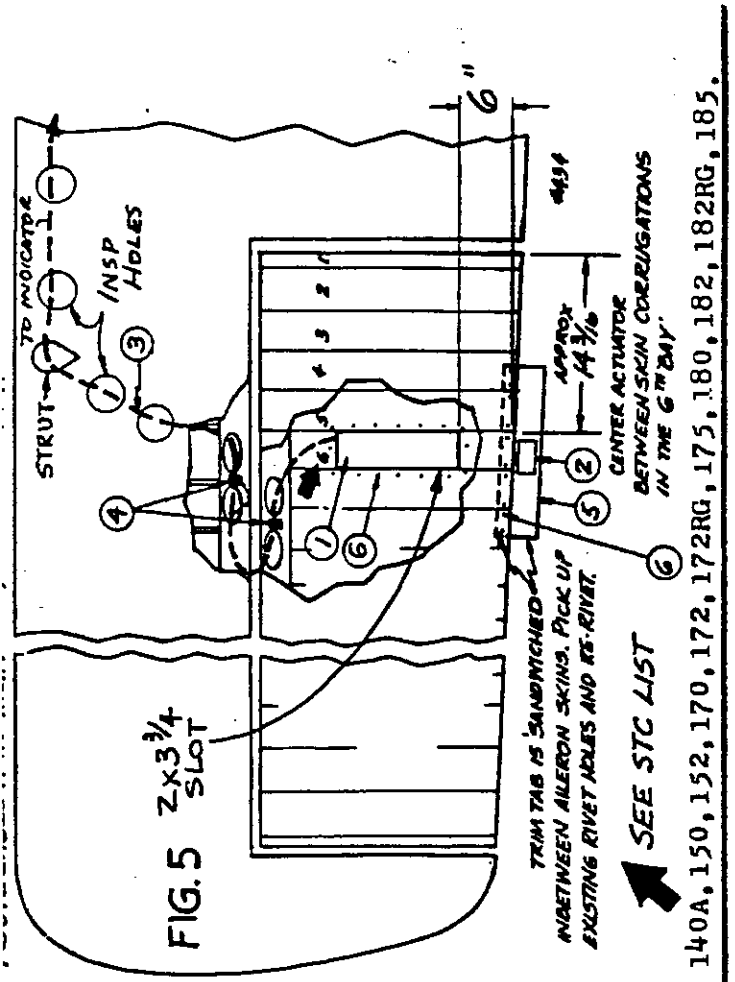


GENERAL INDEX FOR ALL INSTALLATIONS

Item	Description
1	Servo Assy.
2	Hands-off placard
3	Electrical cable
4	Cable clamp AN742D3 or equal. As req'd.
5	Trim tab assy.
6	Common aluminum 3/32 dia. pop-rivet USM AD32ABS.

USE NOCHERRY RIVETS IN TAB  
AERO-TRIM, INC.  
1130 102 Street  
Day Harbor, FL 33154



NOTE: FOR 205S, ROUTE WIRE BEST WAY.  
3

REMOVING WING TIP FACULTATES WIRE ROUTING

TO INDICATOR

For C210s with ribbed  
ailerons, Install per  
FIG. 6. Use STC  
SA101950

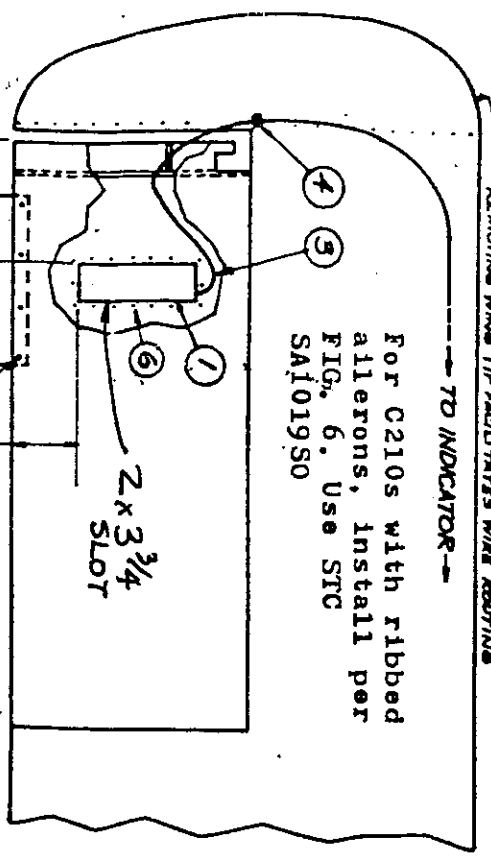
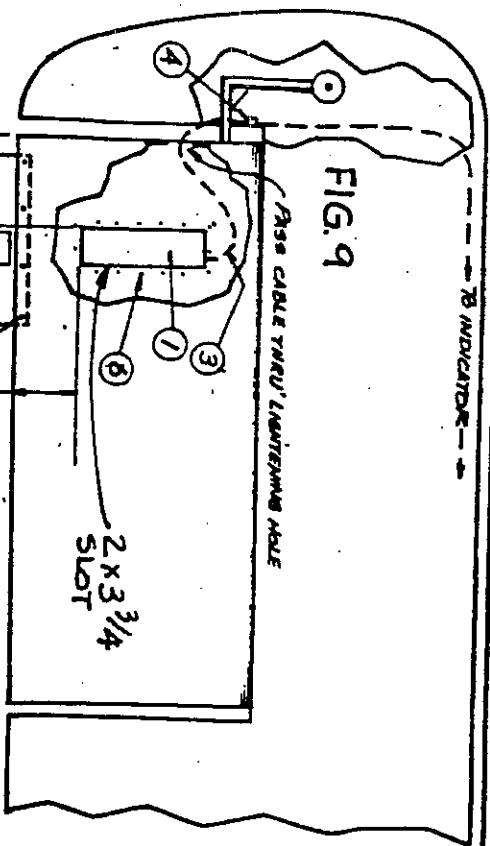


FIG. 7

CESSNA 210 and C177 C177RG smooth ailerons only

TO INDICATOR

FIG. 9

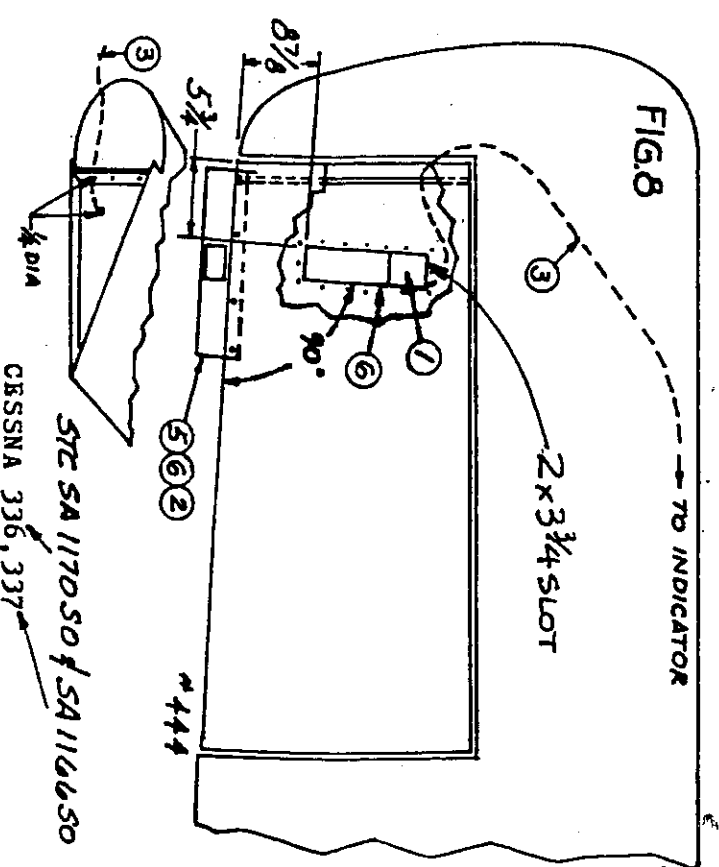


STC SA104450  
PIPER PA23 Apache, Aztec

FIG. 8

TO INDICATOR

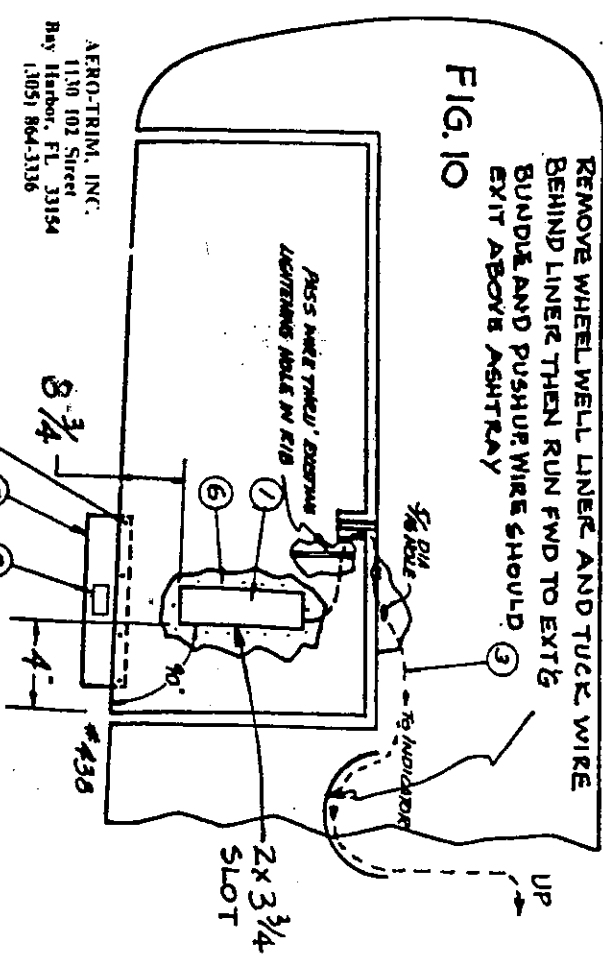
2 x 3 3/4 SLOT



STC SA117050 / SA116650  
CESSNA 336, 337

FIG. 10

REMOVE WHEEL WELL LINER AND TUCK WIRE  
BEHIND LINER THEN RUN FWD TO EXIT  
BUNDLE AND PUSH UP WIRE SHOULD  
EXIT ABOVE ASHTRAY



AERO-TRIM, INC.  
1130 103 Street  
Bay Harbor, FL 33154  
(305) 864-3336

PIPER PA24 Comanche, PIPER PA30, 39 Twin Comanche

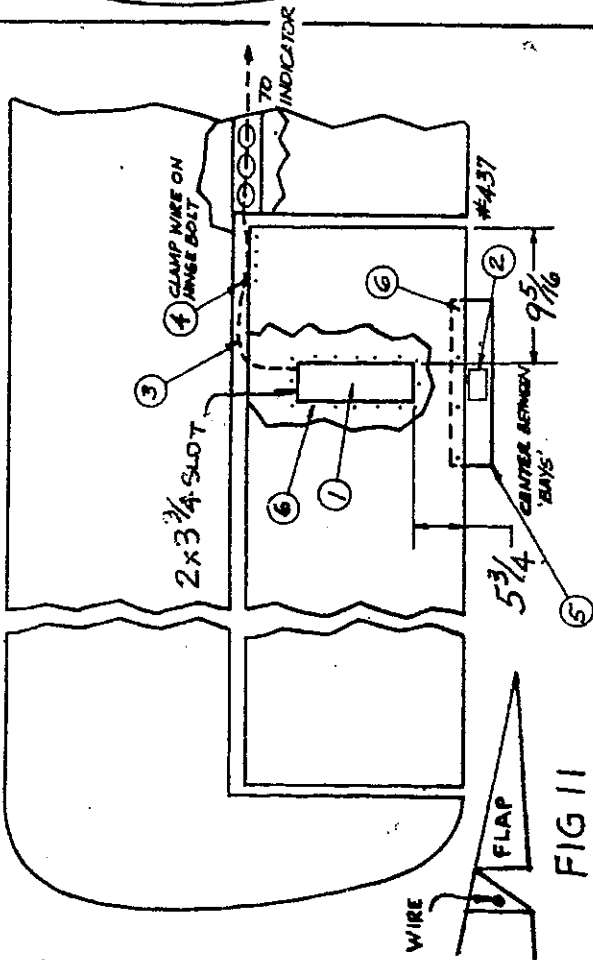


FIG 11  
STC SA121650

PIPER PA28 Cherokee } Straight wings  
PIPER PA32 Lance }

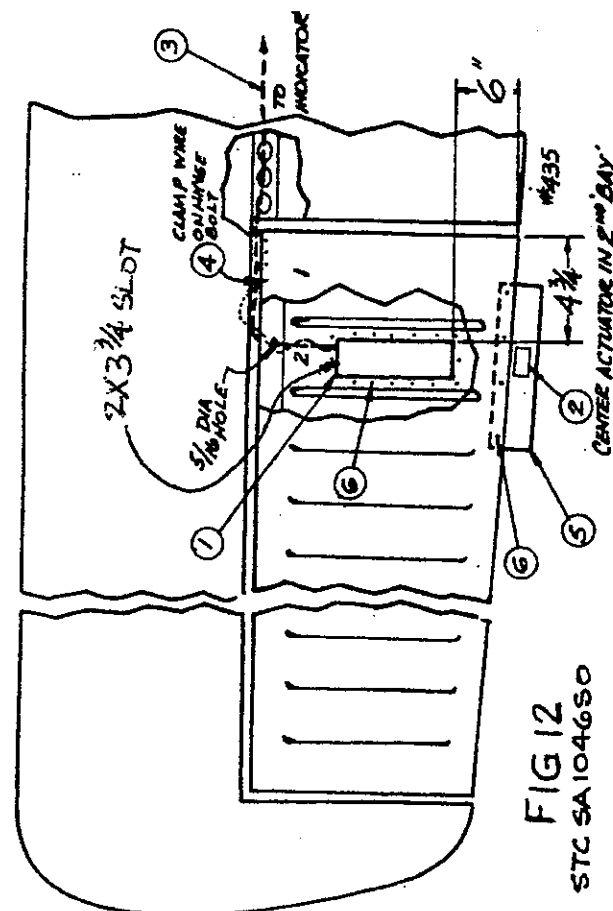


FIG 12  
STC SA104650

PIPER PA28 Arrow etc. Tapered wings

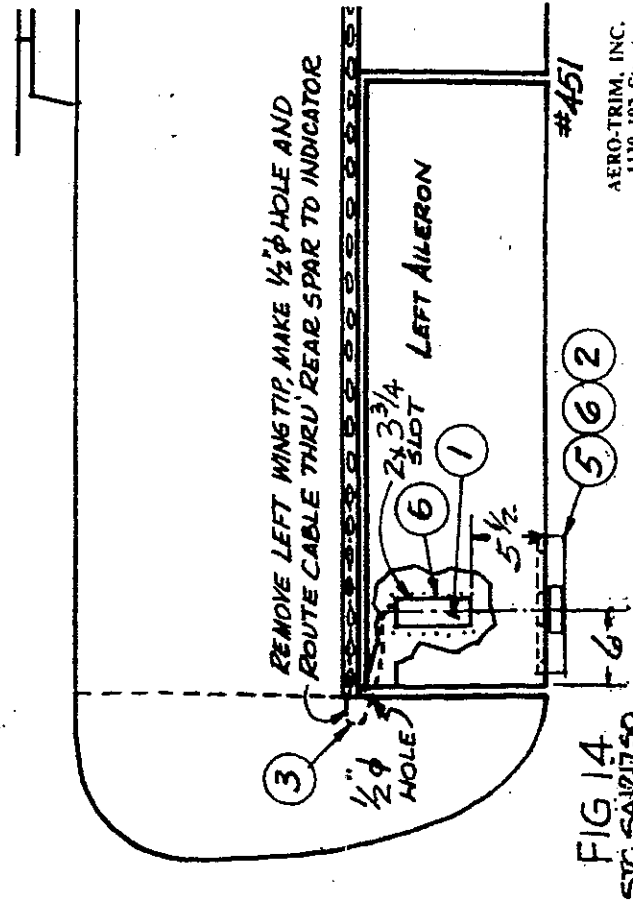


FIG 14  
STC SA121750

PIPER PA34 Seneca

AERO-TRIM, INC.  
1130 102 Street  
Bay Harbor, FL 33154  
(305) 864-3336

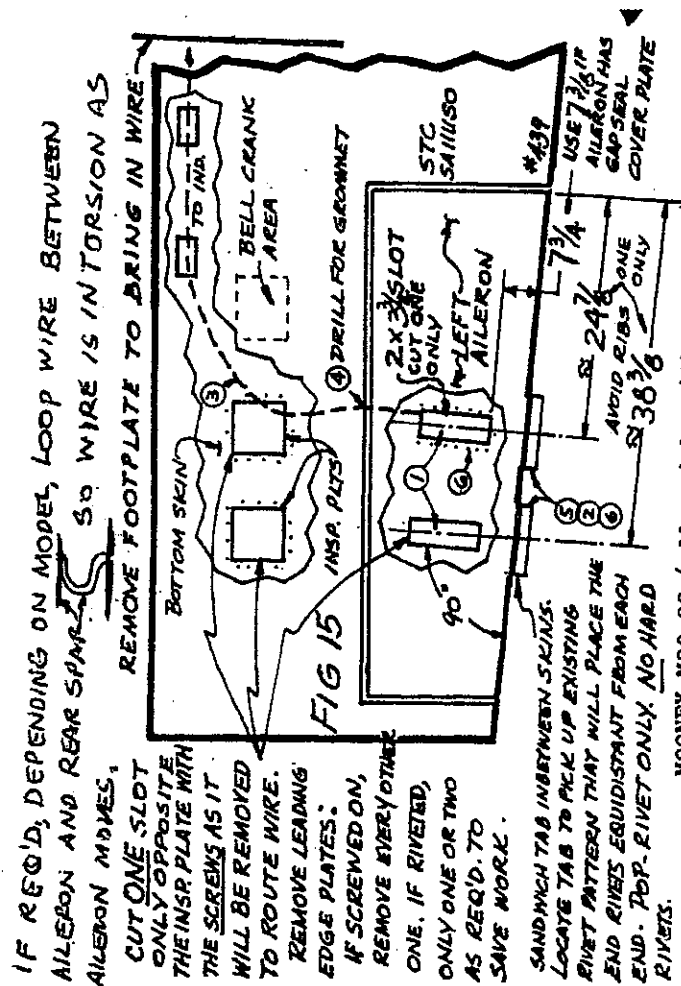
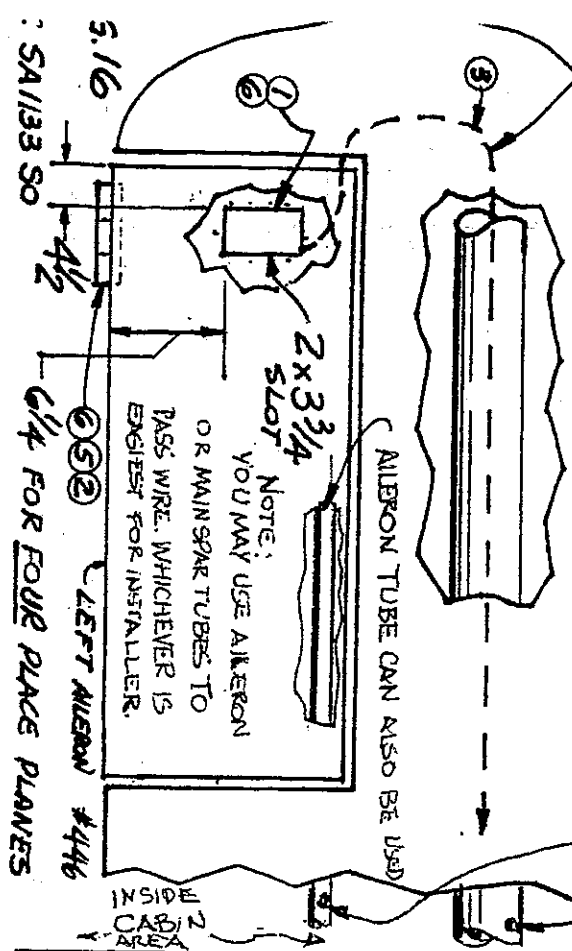


FIG 15

MOONEY M20.22 (all models with metal wings)

REMOVE WING TIP, PASS WIRE THROUGH END OF

ALERON AROUND TIP AND INSIDE MAIN SPAR TO INDICATOR  
 2. DRILL 1/8" HOLE IN SPAR MIDSHIP TO EXIT WIRE



AA-5, -5A, -5B, AG-5B

GULFSTREAM AMERICAN AND AEROSPACE (AMERICAN GENERAL)

Bestest and most rapid means of routing wire is to remove the wing tip and pass wire down leading edge of wing through the wheel well inboard to the exit wire bundle and into cabin to indicator.  
 Center cut-out hole in the 4th "bay" as shown. Hole dia. 2"x.6"

TO INDICATOR

Drill 5/16 hole in plastic hole cover and in fwd spar of aileron to pass wire.

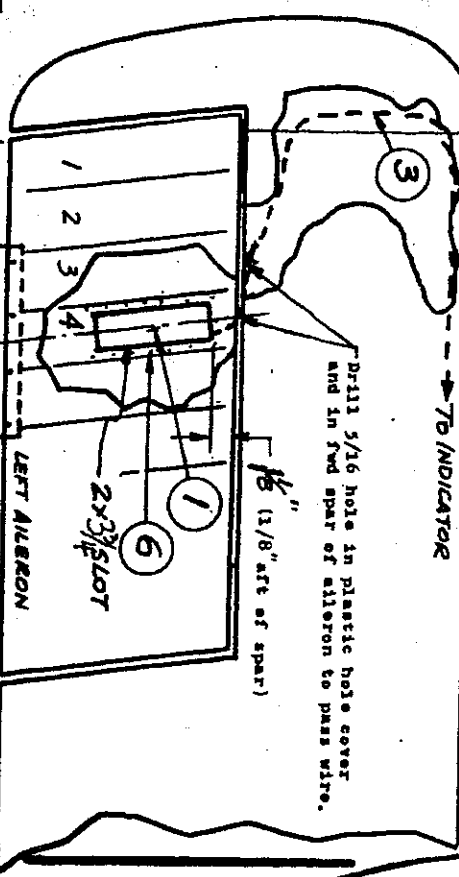


FIG. 18

Approx 14 1/2  
 Center in 4th bay.  
 STC SA124550

ROCKWELL-COMMANDER 112, 112B, 112TC, 112TCA, 114, 114A

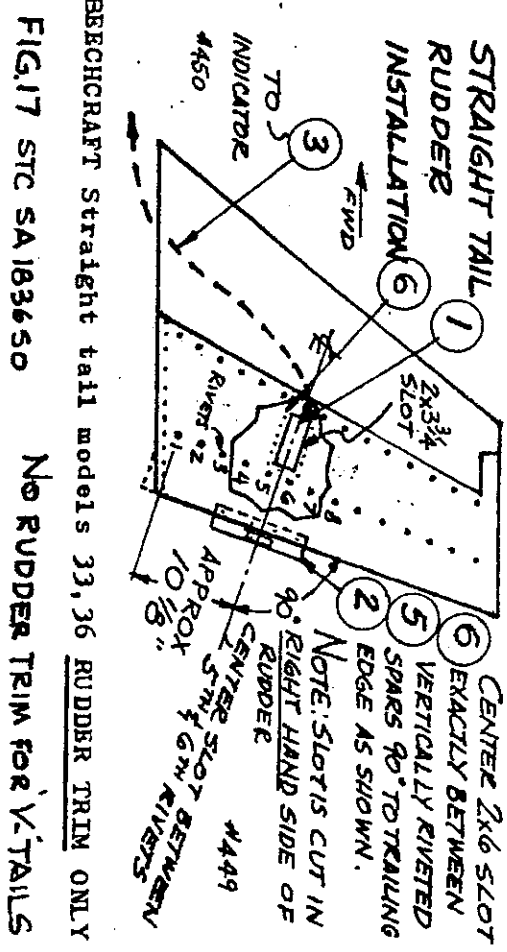


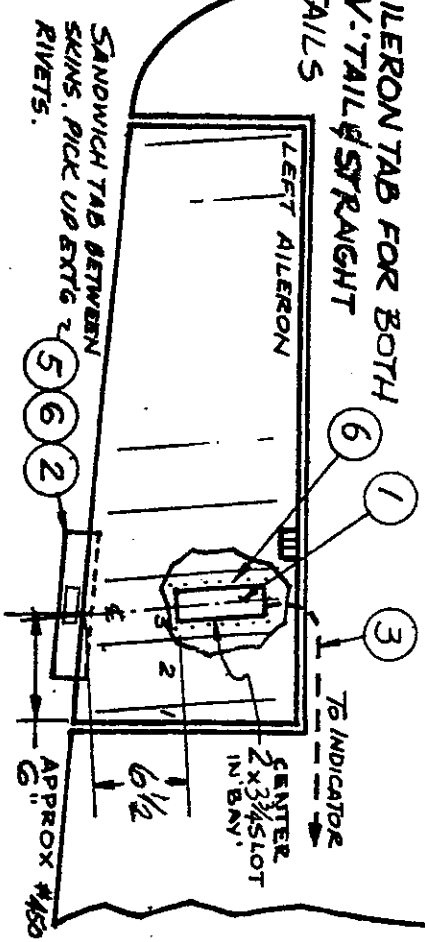
FIG. 17 STC SA183650

No RUDDER TRIM for V-TAILS

BECHCRAFT Straight tail models 33, 36 RUDDER TRIM ONLY

NOTE: THE SERVO OVERSPANS THE CORRUGATIONS IN BONANEA ALERONS A SLIGHT AMOUNT. INSTALLER HAS THREE CHOICES: 1. REMOVE ABOUT 3/4 MATERIAL FROM EACH SIDE OF THE SERVO BASE PLATE. 2. FAIR IN WITH EPOXY PUTTY. 3. LEAVE AS IS AS IT IS NOT VERY OBVIOUS.

ALERON TAB FOR BOTH V-TAIL STRAIGHT TAILS



SANDWICH TAB BETWEEN SKINS. PICK UP EXTG RIVETS.

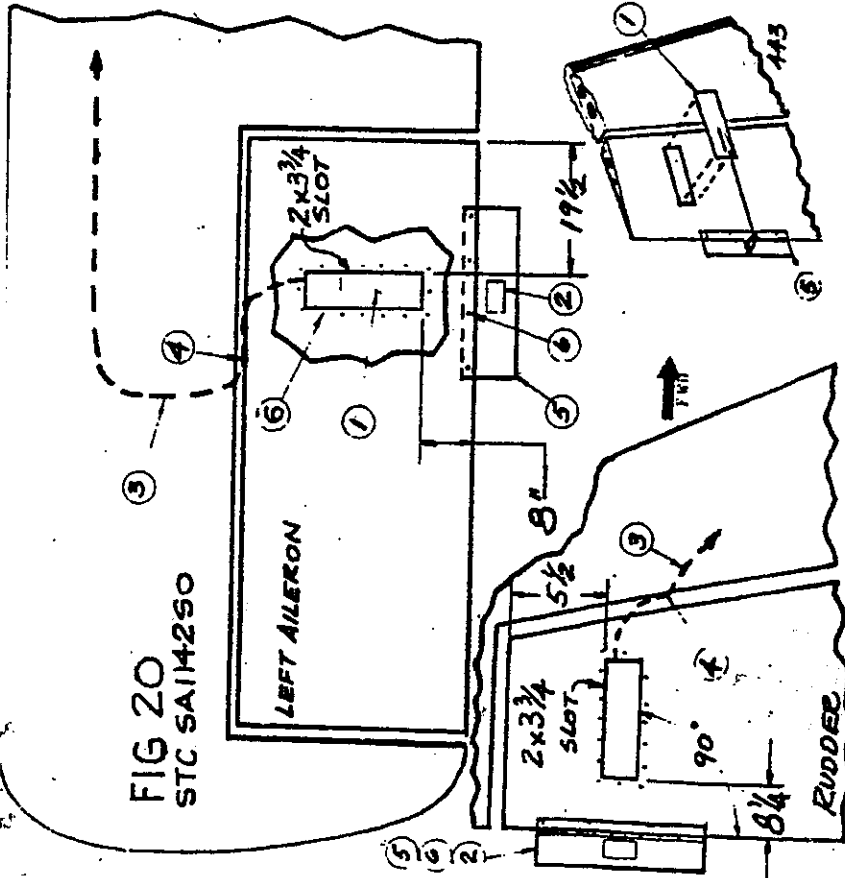
BECHCRAFT

FOR Aileron Trim Only V-TAILS

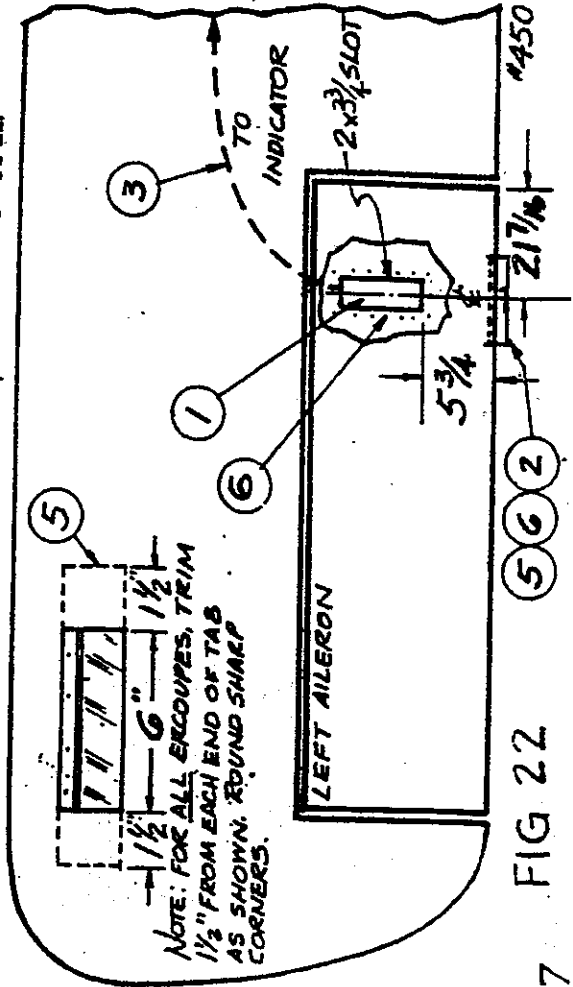
FIG. 19

AERO-TRIM, INC.  
 1130 102 Street  
 Bay Harbor, FL 33154  
 (305) 864-3336

STC SA121050 - AILERON TRIM  
 STC SA121190 - AILERON TRIM  
 STC SA121190 - AILERON TRIM  
 NO RUDDER TRIM FOR V-TAILS



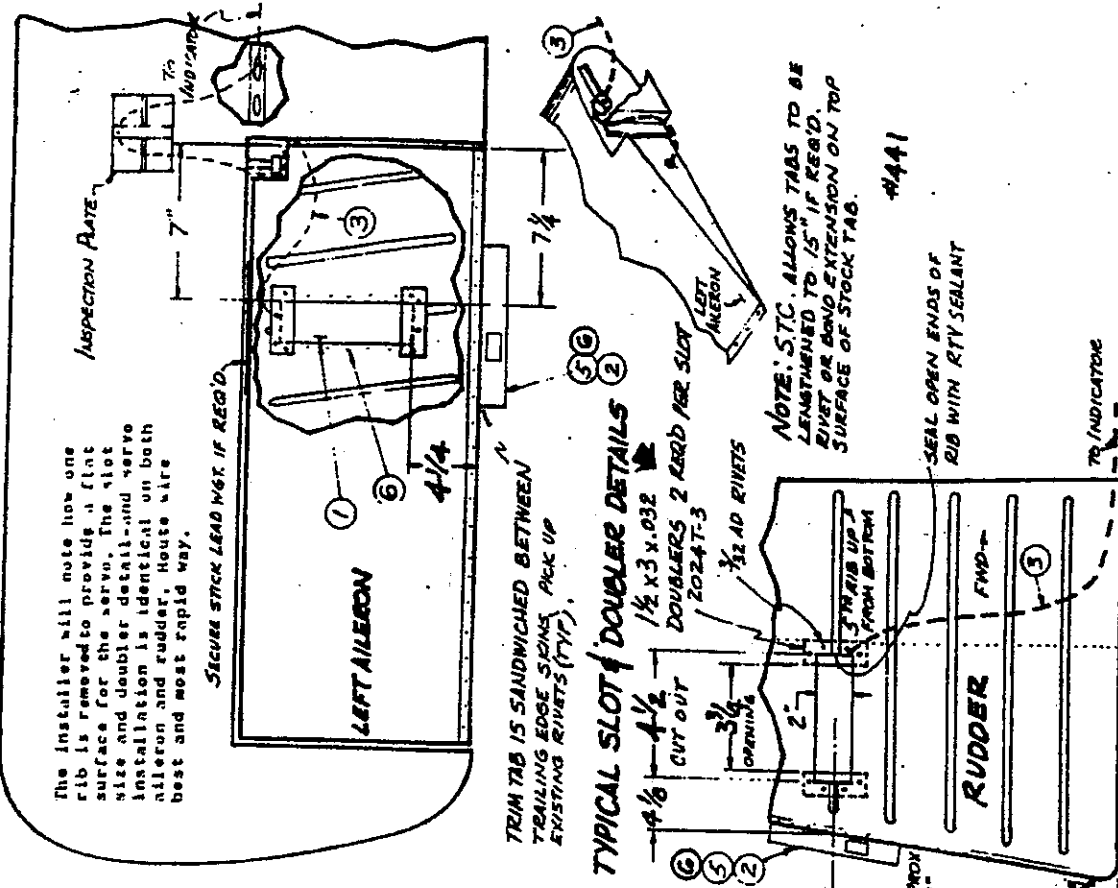
LAKE AMPHIBIANS Aileron and/or Rudder Trim



NOTE: FOR ALL ERCOUPES, TRIM 1/2" FROM EACH END OF TAB AS SHOWN. ROUND SHARP CORNERS.

**FIG 22**

ERCOUPE, FORNEY, ALON  
STC SAI2675A  
SA 12 PA CA

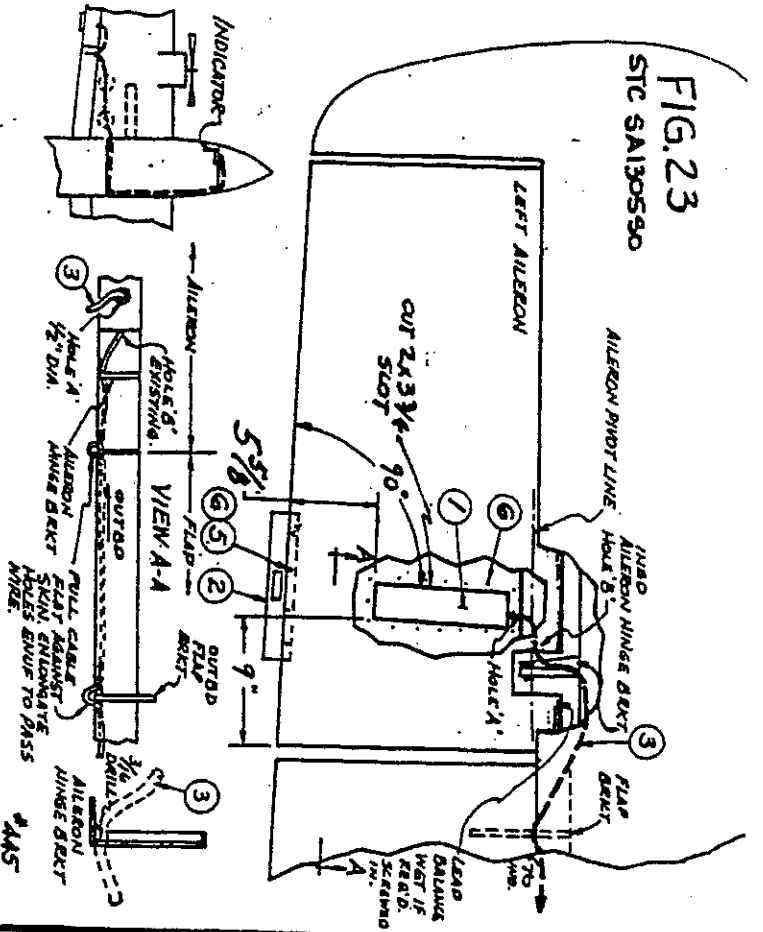


**FIG 21**

NAVION Aileron and/or Rudder Trim  
STC SAI21950

AERO-TRIM, INC.  
1130 102 Street  
Bay Harbor, FL 33154  
(305) 864-3336

FIG.23  
STC SA130590



Run the cable from the panel down the right side of the cabin underneath the trim panel to the aft bulkhead behind the rear seats. Pass the cable across the bulkhead under the trim down into the wheel-well. Remove bolt from hydro cylinder to lower gear door. Tie cable to existing wire bundle and then thru 2 inspection holes, out into the wing.

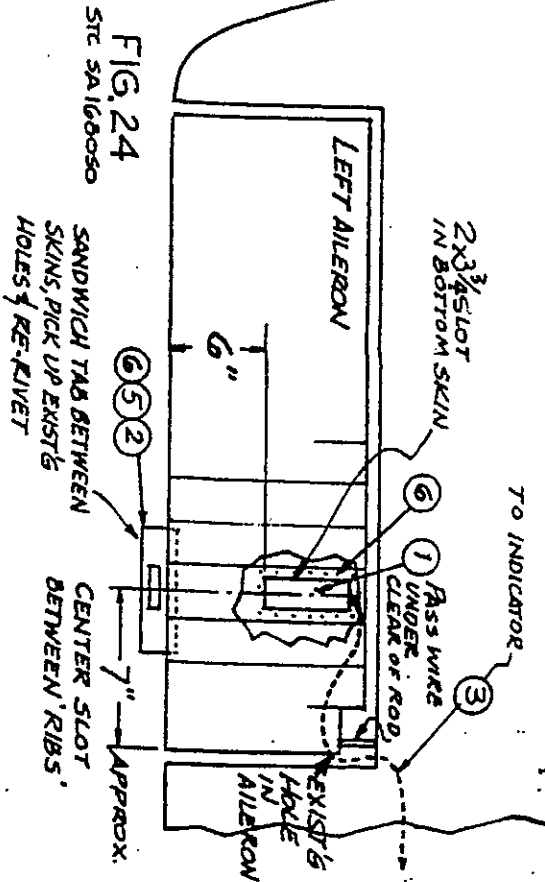
Flongate holes around the flap brkt. and sheet metal joints as shown in View A-A. Pull cable tight to flush up to skin. Hole "B" is on pivot line. Hole "A" is enlarged enuf to fish wire.

ABROSTAR

AERO-TRIM, INC.  
1130 102 Street  
Bay Harbor, FL 33154  
(305) 864-3336

#452

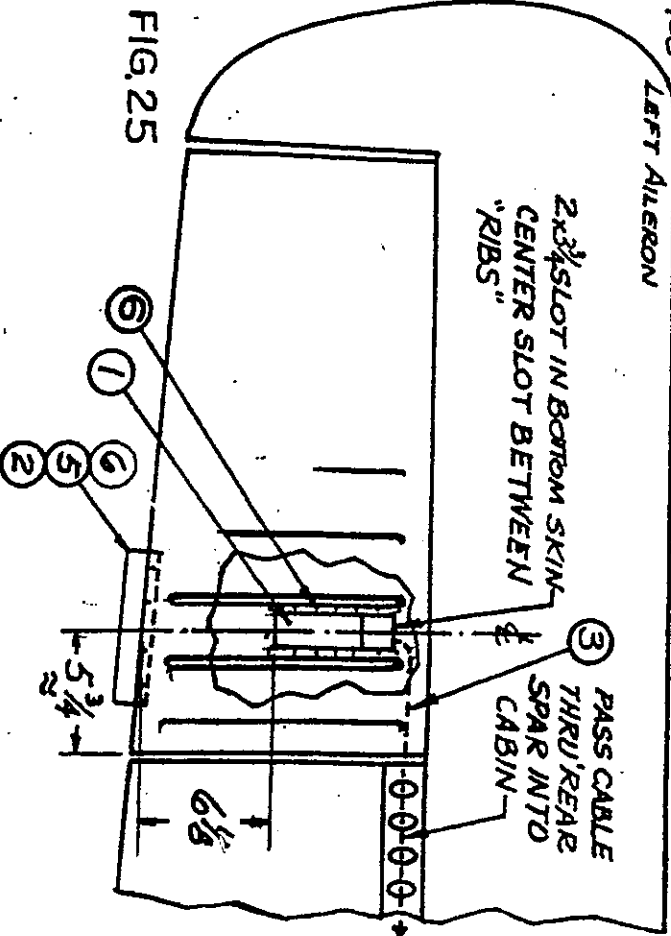
FIG.24  
STC SA16050



BEECH models 19, 23, 24.

#453

FIG.25



PIPER PA32-301, 32-301T, 32R-301, 32R-301T, SA1892.50  
PIPER PA-44-180, -180T STC 5A280450

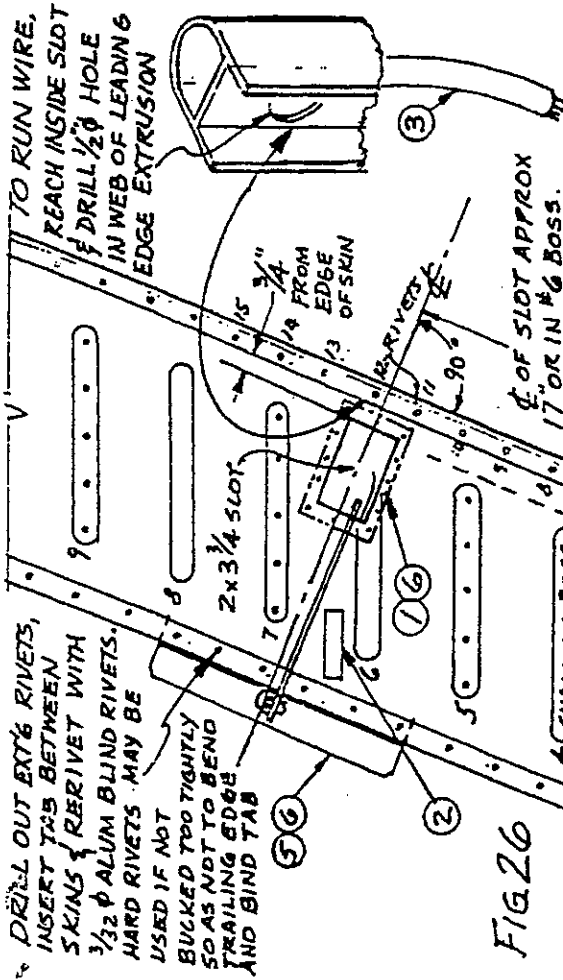


FIG. 26

Ø OF SLOT APPROX 17" OR IN #6 BOSS. ON SMOOTH RUDDERS, USE SAME 17" BUT IT WILL BE RIVETS #13, 14 & 15

SERVO INSTALLS ON OUTSIDE OF SKIN

APPROX 17"

TO INDICATOR FWD

ALTERNATE WIRE ROUTE: DO NOT DRILL HOLE IN WEB, INSTEAD DRILL 1/4" Ø HOLE IN BOTTOM RUDDER RIB AND PASS WIRE BETWEEN EXTRUSION AND BOSSES AS SHOWN

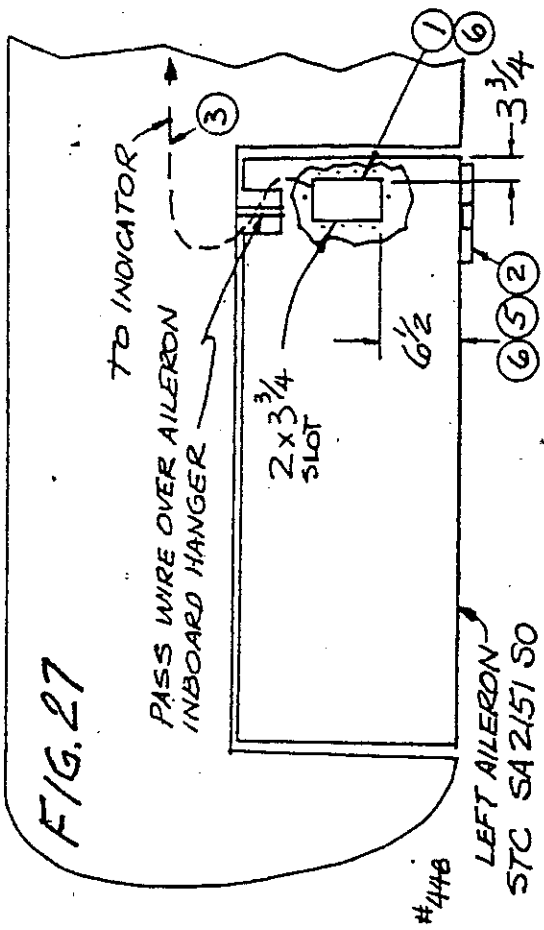
THIS TEMPLATE **MUST BE MADE AND USED FOR PROPER INSTALLATION**

STC SA233050

MOONEY-Rudder Trim Only

VERO-TRIM, INC.  
1130 102 Street  
Bay Harbor, FL 33154  
(305) 864-1336

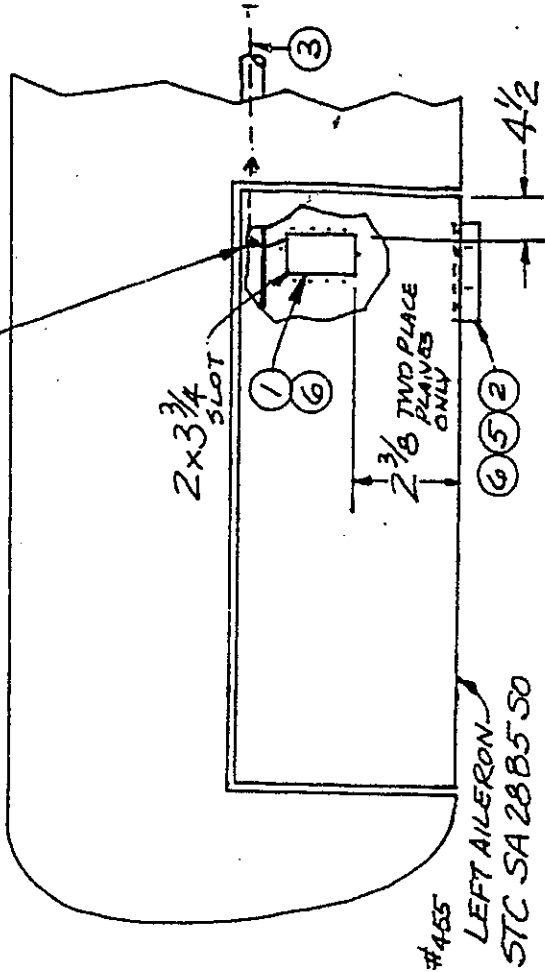
FIG. 27



LEFT AILERON  
STC SA215150

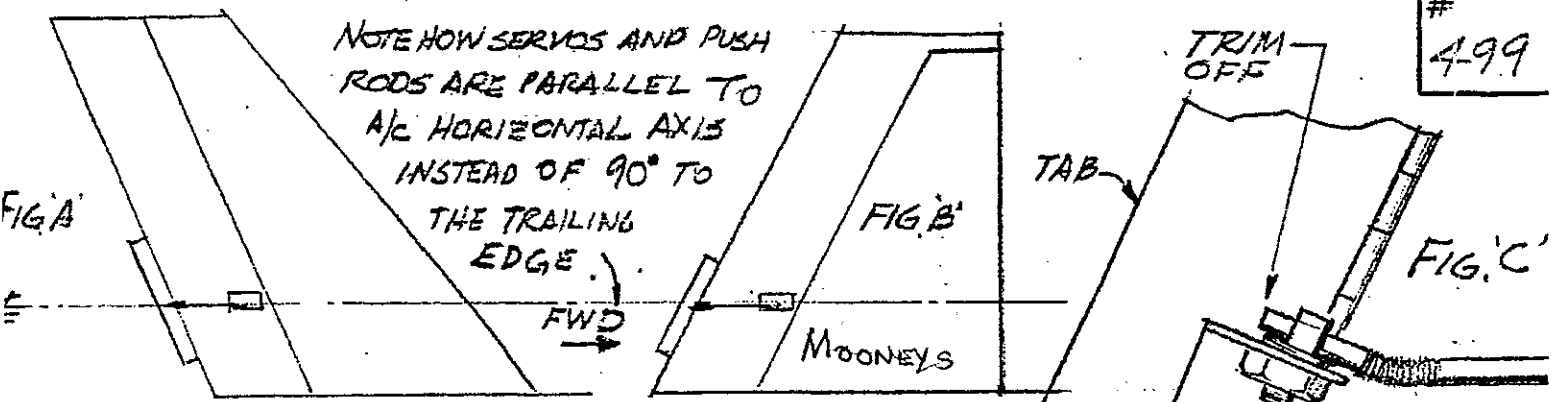
MAULB N-4, -5, -6, -7, and MX-7 series

FIG. 28



LEFT AILERON  
STC SA28B550

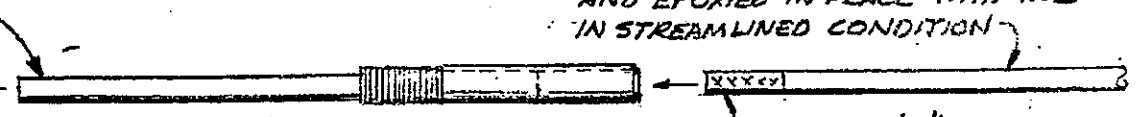
GULFSTREAM AEROSPACE (YANKEE) AA-1, -1A, -1B, -1C



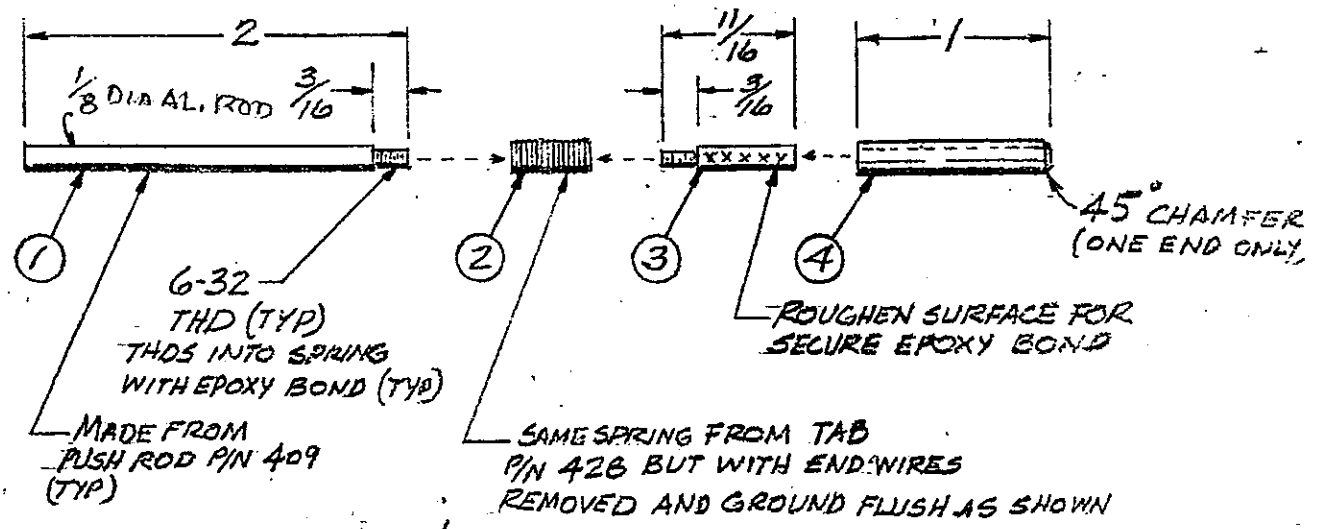
INSTALLATION: FASTEN SERVO WITH SPRING CLIPS TEMPORARILY. INSTALL TAB AND -1 ROD PER FIG. C. CLAMP TAB IN STREAMLINED POSITION AND MARK PUSH ROD FOR CUTOFF. INSERT ROD IN EITHER SPRING OR TUBE, WITH EPOXY. NOW FASTEN SERVO PERM. WITH 3/32 POP RIVETS.

EXISTING PUSH ROD FROM SERVO TRIMMED TO LENGTH, ROUGHEN'D AND EPOXIED IN PLACE WITH TAB IN STREAMLINED CONDITION

THIS END CLAMPS INTO BUG SCREW 1/8" IN 426 AND TRIMMED OFF PER STD INSTALLATION SEE FIG. C



**THE ASSEMBLY**  
WITH ALL PARTS EPOXIED IN PLACE



NOTE 1. AS AN OPTION, PARTS 3 & 4 (THE TUBING), MAY BE ELIMINATED IN FAVOR OF THREADING THE EXISTING PUSH ROD FROM THE SERVO. TO MATCH - 3

NOTE 2: THIS UNIVERSAL FEATURE IS TO BE USED WHEN AERODYNAMICS OR AESTHETICS ARE OF CONCERN. OLD INSTALLATION (90° TO TRAILING EDGE) IS ARTISTICALLY OFFENSIVE TO SOME OWNERS.

4	499.4	TUBING (FROM HOBBY SHOP)
3	499.3	ADAPTER ROD
2	499.2	SPRING P/N 426
1	499.1	CLAMP ROD

item	qty	part#	description
title PUSH ROD UNIVERSAL JOINT FOR RUDDERS			
mat'l MADE FROM P/N 409.			
date	4-1-95	scale	FULL
tolerances	dec ± .005	frac ±	1/64
next assy	INSTALLATION		